

# Forget GPS! Learn How to Navigate By The Southern Cross Constellation

## Understanding the Southern Cross:

The Southern Cross is one of the most recognizable constellations in the southern hemisphere. It consists of four bright stars that form a cross, and it holds a significant cultural and navigational importance for centuries. If you ever find yourself lost in the wild or stranded at sea without GPS, knowing how to navigate by the Southern Cross can be a lifesaver.

## Locating the Southern Cross:

The first step to navigate by the Southern Cross is to locate it in the night sky. The constellation is visible in the southern hemisphere and is most prominent in regions close to the equator. Look for four bright stars forming a cross shape. The top star is known as Alpha Crucis, the bottom-right star is called Beta Crucis, the bottom-left star is Gamma Crucis, and the fourth star is Delta Crucis. These four stars will guide you in determining your direction and position.

## Using the Southern Cross for Navigation:

One of the most fascinating aspects of the Southern Cross is that it is a useful navigation tool. By observing the direction and angle of the Southern Cross, you can easily determine your approximate location and which way is north.

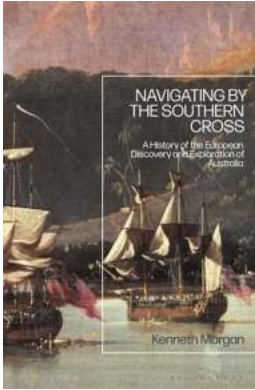
### **Navigating by the Southern Cross: A History of the European Discovery and Exploration of Australia**

by Marita Woywod Crandle (1st Edition, Kindle Edition)

★★★★☆ 4.5 out of 5

Language : English

File size : 6567 KB



Text-to-Speech : Enabled  
Screen Reader : Supported  
Enhanced typesetting : Enabled  
Word Wise : Enabled  
Print length : 442 pages



## **Avoiding common misconceptions:**

Before we delve into the details, let's address a common misconception. Contrary to popular belief, the Southern Cross does not point to the South Pole. The constellation itself does not move, while the Earth rotates. Therefore, the position of the Southern Cross changes throughout the night and throughout the year. However, it can still be a valuable navigational aid if used correctly.

## **Step 1: Finding the Southern Cross:**

Locate the Southern Cross in the night sky. Remember the four prominent stars that form the cross shape. It is crucial to identify the Southern Cross accurately before proceeding.

## **Step 2: Determining the Cross's Angle:**

Once you've found the Southern Cross, draw an imaginary line from the top star (Alpha Crucis) through the bottom star (Gamma Crucis) and extend it beyond. This line represents the long axis of the cross. Extend this line about four and a half times its length.

## **Step 3: Locating South:**

At the endpoint of the extended line, drop a perpendicular imaginary line to the horizon. This point where the line touches the horizon represents the south direction. You have now found south without the need for a compass!

#### **Step 4: Determining North, East, and West:**

Once you know the location of the south, the north direction is right behind you. East will be on your left, and west will be on your right. Remember, the cross's long axis points east-west, and the short axis (from Beta Crucis to Delta Crucis) points north-south.

#### **Navigating by the Southern Cross at Different Times:**

As mentioned earlier, the Southern Cross's position varies throughout the night and year. Therefore, it is essential to understand how to navigate using the Southern Cross at different times.

#### **Navigating at Midnight:**

At midnight, the Southern Cross will be at its highest point in the sky. So, if you are lost and can see the Southern Cross and the Long Axis, draw an imaginary line from the top of the long axis and extend it to the ground. This line will indicate the approximate north-south line.

#### **Navigating in the Early Evening:**

In the early evening, the Southern Cross will be tilted to the right, resembling a kite. To find the approximate south direction, draw an imaginary line from the bottom-right star (Beta Crucis) to the top-left star (Alpha Crucis) and extend it to the horizon.

#### **Navigating in the Early Morning:**

In the early morning, the Southern Cross will be tilted to the left. Similar to navigating in the early evening, you can draw an imaginary line from the bottom-left star (Gamma Crucis) to the top-right star (Delta Crucis) and extend it to locate the south direction.

## **The Cultural Significance of the Southern Cross:**

Throughout history, the Southern Cross has held immense cultural significance for various civilizations. Indigenous tribes in different parts of the southern hemisphere have used the Southern Cross to navigate and determine seasons, as well as incorporating it into their mythology and storytelling.

Notably, the Southern Cross is present on several national flags, including those of Australia, New Zealand, and Brazil. It has become a symbol of identity and pride for these nations, representing their geographical location in the southern hemisphere.

:

While GPS technology is undoubtedly convenient, it is not always reliable or accessible in every situation. Knowing how to navigate using the Southern Cross can be a valuable skill, especially when venturing into remote areas or embarking on adventurous journeys. By understanding the Southern Cross's position and utilizing its orientation, you can confidently navigate without relying on modern technology.

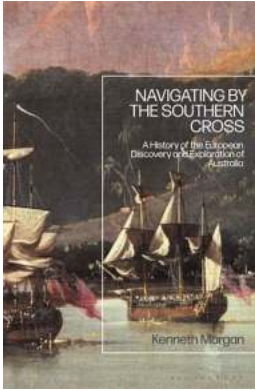
## **Navigating by the Southern Cross: A History of the European Discovery and Exploration of Australia**

by Marita Woywod Crandle (1st Edition, Kindle Edition)

★★★★☆ 4.5 out of 5

Language : English

File size : 6567 KB

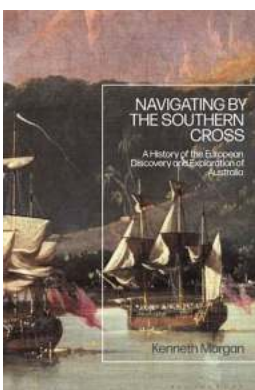


Text-to-Speech : Enabled  
Screen Reader : Supported  
Enhanced typesetting : Enabled  
Word Wise : Enabled  
Print length : 442 pages



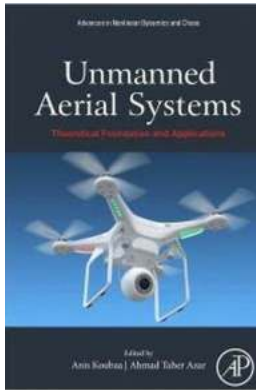
In this comprehensive study, Kenneth Morgan provides an authoritative account of European exploration and discovery in Australia. The book presents a detailed chronological overview of European interests in the Australian continent, from initial speculations about the 'Great Southern Land' to the major hydrographic expeditions of the 19th century. In particular, he analyses the early crossings of the Dutch in the 17th century, the exploits of English 'buccaneer adventurer' William Dampier, the famous voyages of James Cook and Matthew Flinders, and the little-known French annexation of Australia in 1772.

Introducing new findings and drawing on the latest in historiographical research, this book situates developments in navigation, nautical astronomy and cartography within the broader contexts of imperial, colonial, and maritime history.



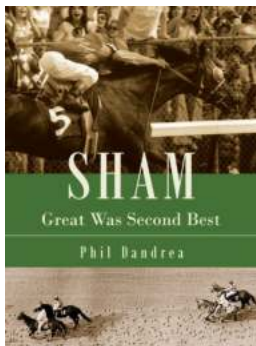
## Forget GPS! Learn How to Navigate By The Southern Cross Constellation

Understanding the Southern Cross: The Southern Cross is one of the most recognizable constellations in the southern hemisphere. It consists of four bright stars that form a...



## The Revolutionary Breakthrough: Exploring the Theoretical Foundation and Unveiling the Exciting Applications of Nonlinear Dynamics

The Undeniable Power of Nonlinear Dynamics Nonlinear dynamics has been revolutionizing numerous fields of study, from physics and chemistry to biology and...



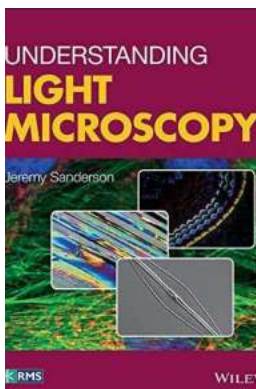
## Sham Great Was Second Best - The Untold Story Behind the Legend

The Rise of Sham Great Sham Great, a name that any avid horse racing fan is familiar with. He was a magnificent thoroughbred racehorse whose abilities and achievements left...



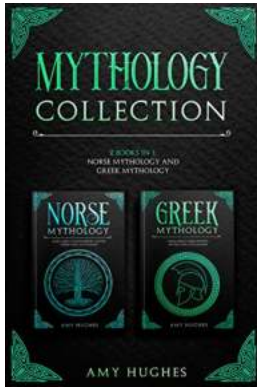
## Discover the Hidden World of Light Novels: Have a Secret Light Novel Collection?

Are you tired of the same old stories and looking for something new and exciting to read? Look no further! Dive into the captivating world of light novels – a genre that has...



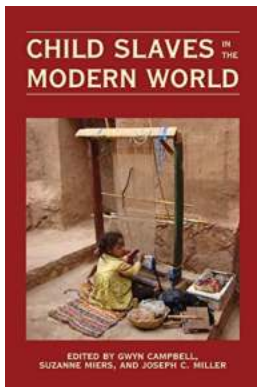
## Unlocking the Secrets of the Microscopic World: Understanding Light Microscopy Rms Royal Microscopical Society

The Beauty and Power of Light Microscopy Have you ever wondered how scientists explore the hidden realms of the microscopic world? How do they unravel the mysteries of cells,...



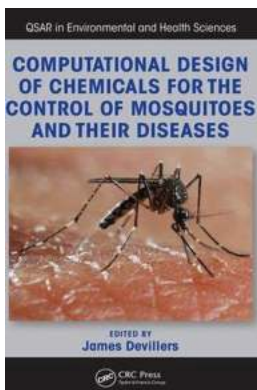
## The Ultimate Mythology Collection: Unveiling the Secrets of Norse and Greek Mythology

The Mysterious Worlds of Norse and Greek Mythology has always been an intriguing subject that captivates people's imagination. Let's dive into the fascinating...



## 5 Heartbreaking Stories Revealing the Existence of Child Slaves in the Modern World

The issue of child slaves in the modern world is a distressing reality that is often overlooked. While many people might believe that slavery is a thing of the past, the...



## Discover how Computational Design is Revolutionizing Mosquito Control

Mosquitoes: A Global Menace When it comes to dangerous creatures, mosquitoes are undoubtedly among the top contenders. These tiny pests not only annoy us with their buzzing...

navigating by the southern cross a history of the european discovery and exploration of australia