

The Talun Huma System And Rural Social Economy: Discover the Ancient Indonesian Agricultural Technique that Boosts Villages' Economy

Indonesia is known for its diverse culture and natural landscapes. One of its hidden treasures is the traditional agricultural practice called the Talun Huma system. This ancient technique not only sustains food production but also plays a vital role in enhancing the rural social economy. In this article, we will delve into the intricacies of the Talun Huma system and explore how it positively impacts the livelihoods of rural communities in Indonesia.

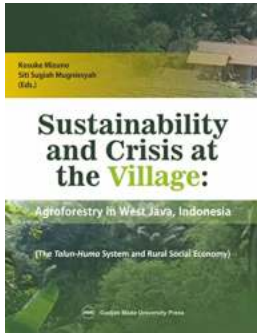
What is the Talun Huma System?

The Talun Huma system, also known as the forest garden system, is an agroforestry method that has been practiced for centuries in Indonesia. It involves planting a combination of annual crops, perennials, and trees in a pattern that mimics the structure of a natural forest. The concept behind this system is to create a sustainable and self-regulating ecosystem that maintains soil fertility, conserves water, and provides a diverse range of products.

The Components of the Talun Huma System

The Talun Huma system consists of three main components:

**SUSTAINABILITY AND CRISIS AT THE VILLAGE:
AGROFORESTRY IN WEST JAVA, INDONESIA:**



(THE TALUN-HUMA SYSTEM AND RURAL SOCIAL ECONOMY) by Alan Hirshfeld (Kindle Edition)

★★★★☆ 4.9 out of 5

Language : English
File size : 6157 KB
Text-to-Speech : Enabled
Screen Reader : Supported
Enhanced typesetting : Enabled
Print length : 569 pages
Lending : Enabled



1. Annual Crops

Annual crops such as rice, maize, and various vegetables are cultivated in conjunction with the perennials and trees. These crops provide immediate food sources and contribute to the villagers' daily sustenance.

2. Perennials

Perennial crops, including bananas, papayas, and mangoes, are planted alongside the annual crops. These plants require less maintenance and continue to produce fruits and other valuable products for several years.

3. Trees

Trees play a crucial role in the Talun Huma system. They provide shade, prevent erosion, improve soil fertility, and offer a wide range of products such as timber, firewood, fruits, and medicinal plants. Some commonly planted trees in this system are teak, mahogany, and bamboo.

The Impact on Rural Social Economy

The Talun Huma system has a profound impact on the rural social economy. Here are some of the ways it contributes to the well-being of the villagers:

1. Sustainable Food Production

By incorporating a variety of crops and trees, the Talun Huma system ensures a sustainable food production system. Villagers have access to a diverse range of nutritious food throughout the year, reducing their dependency on external food sources.

2. Income Generation

The Talun Huma system allows villagers to generate income through the sale of surplus crops, fruits, timber, and other non-timber forest products. This additional income improves their financial stability and enables them to invest in education, healthcare, and other essential needs.

3. Conservation of Natural Resources

The Talun Huma system promotes the conservation of natural resources. By maintaining the forest structure, it preserves biodiversity, protects water sources, and prevents soil erosion. This sustainable agricultural practice ensures the long-term availability of valuable resources for future generations.

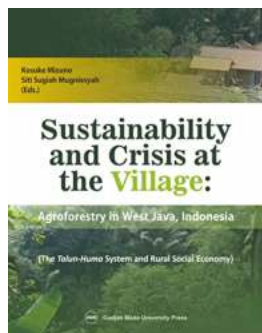
4. Strengthening Social Cohesion

The Talun Huma system is deeply rooted in Indonesian culture and tradition. It fosters a sense of community and solidarity among the villagers as they work together to maintain and manage the forest garden. This unity strengthens social cohesion and contributes to the overall well-being of the community.

The Future of the Talun Huma System

Despite its numerous benefits, the Talun Huma system is facing challenges in the modern era. Rapid urbanization, climate change, and the availability of commercial agricultural products have led to a decline in its practice. However, there is growing recognition of its importance, and efforts are being made to revive and promote this traditional agricultural technique.

In , the Talun Huma system offers a sustainable and holistic approach to agriculture that positively impacts the rural social economy. By combining annual crops, perennials, and trees, this ancient Indonesian technique ensures food security, income generation, conservation of natural resources, and social cohesion within rural communities. Embracing and supporting the Talun Huma system can contribute to the well-being and prosperity of Indonesian villages for generations to come.



SUSTAINABILITY AND CRISIS AT THE VILLAGE: AGROFORESTRY IN WEST JAVA, INDONESIA: (THE TALUN-HUMA SYSTEM AND RURAL SOCIAL ECONOMY) by Alan Hirshfeld (Kindle Edition)

★★★★☆ 4.9 out of 5

Language : English
File size : 6157 KB
Text-to-Speech : Enabled
Screen Reader : Supported
Enhanced typesetting : Enabled
Print length : 569 pages
Lending : Enabled



Agroforestry here can be regarded as an alternative to enhance production while keeping the ecological and biological balance, following the failure of the “green

revolution". This book attempts to systematically and intensively study agroforestry, especially talun-huma, a combination of slash-and-burn agriculture and productive fallow in a village in Cianjur district, West Java, Indonesia, mainly from the socioeconomic perspective. Its methodology takes the holistic approach and is farmer-centered.

The research started in 1998, just a few months after President Soeharto stepped down, ushering in the era of reform and democratization, and lasted until 2007.

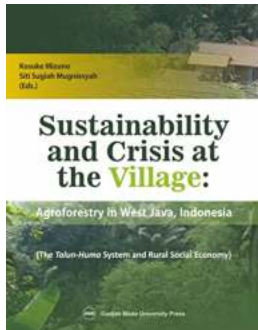
Agroforestry and rural economy faced with crises such as Asian Monetary Crisis in 1997, agrarian conflicts following Soeharto's exit, and the decrease in land fertility because of the sharp increase in a particular crop—in this case, banana leaf—in traditional agroforestry. Analysis of the sustainability and crisis in agroforestry are demonstrated both quantitatively and qualitatively, as well as institutionally, in this book.

This book demonstrates that the agroforestry—or the economy of an agroforestry village—sustained the economy between 1998 and 2007, helping keep it from going into a standstill when the Indonesian economy was in a slump. It also analyzes the impact of institutional changes, such as liberalization of rice import/export and cooperatives, as well as the reform of the village administration on the socioeconomy, especially agroforestry, in the village. It also examines the agrarian conflicts at the research site, especially the looting of teak in the national forest, as well as micro credit, gender relations, and public works, which are all central to a study of agroforestry's development.

The flexibility of the talun-huma and related agroforestry that can accommodate a great variety of plants, and the fertile soil resulting from a multilayered and often dense canopy of vegetation that protects against soil erosion and leaching have enabled people to plant large numbers of banana-leaf, which considerably

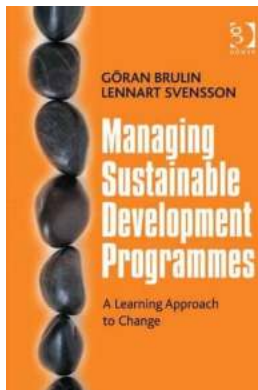
boosted the villagers' earnings. The sharp increase in banana-leaf production since the end of 1990s, however, resulted in the decline of soil fertility—analyzed in this book, which also proposes solutions.

UGM Press, Gadjah Mada University Press



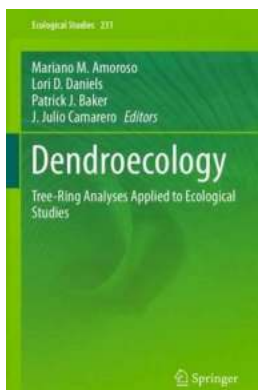
The Talun Huma System And Rural Social Economy: Discover the Ancient Indonesian Agricultural Technique that Boosts Villages' Economy

Indonesia is known for its diverse culture and natural landscapes. One of its hidden treasures is the traditional agricultural practice called the Talun Huma...



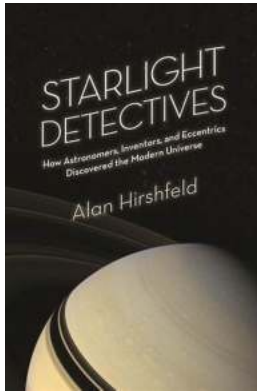
5 Essential Tips for Effectively Managing Sustainable Development Programmes

In today's rapidly changing world, managing sustainable development programmes is crucial for creating a better future for our planet and succeeding in achieving our goals....



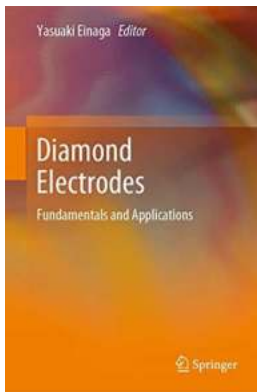
Unveiling Environmental Secrets: How Dendroecology Tree Ring Analyses Revolutionize Ecological Studies

The Fascinating World of Dendroecology and its Applications : When you gaze at the grandeur of a towering tree, have you ever wondered about the untold stories it holds...



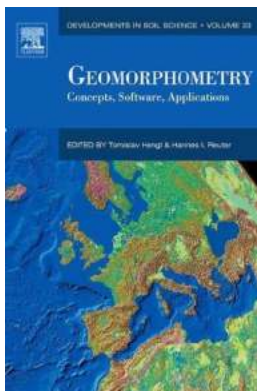
Discover the Remarkable Journey of Astronomers, Inventors, and Eccentrics Unveiling the Modern Universe!

The Fascination with the Cosmos Throughout history, humankind has been captivated by the mystery and wonders of the universe. Countless individuals, driven...



Discover the Mind-Blowing Wonders of Diamond Electrodes: Unveiling the Fundamentals and Exploring their Limitless Applications

Are you ready to dive into the fascinating world of diamond electrodes? Brace yourself for an exciting journey as we unravel the fundamentals behind this cutting-edge...



The Ultimate Guide to Geomorphometry Concepts, Software Applications, and ISSN 33 Revealed!

Have you ever wondered how scientists analyze and measure the shape and form of Earth's landscapes? Geomorphometry, a fascinating field within geography...



Explore the Fascinating World of Stars and Planets - A Comprehensive Introduction!

What are Stars and Planets? Stars and planets have captivated humanity since the dawn of time. They are celestial bodies that exist in our vast universe, ...



Awakening the Consciousness: The Astonishing Impact of the Overview Effect on Human Evolution

The Cosmic Revelation That Transforms Our Perception of the World As we venture into the vastness of the unknown, peering beyond the boundaries of our planet, we uncover a...